



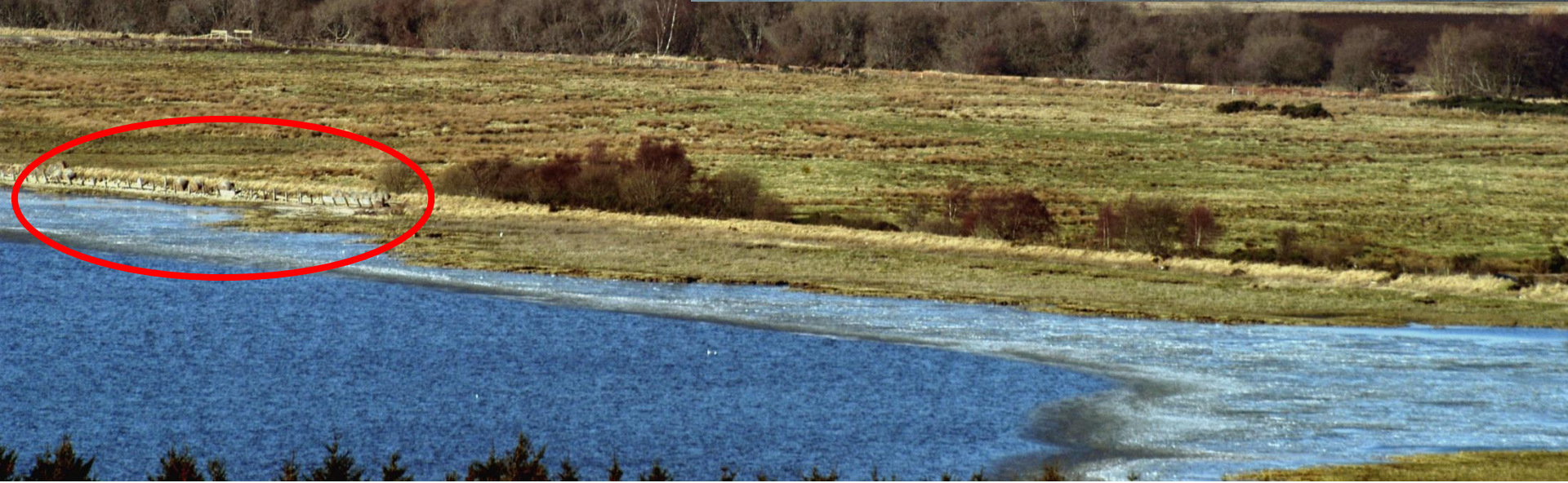
giving
nature
a home





Background to Project

- Nigg Bay important for wintering birds
- 36% saltmarsh lost in Bay 1946 - 1997
- Predicted future sea level rise
- Where would the birds go???





Royal Society for the Protection of Birds

Nigg Bay Coastal Realignment Project
Design and Impacts Study

Babtie Group

95 Bothwell Street, Glasgow G2 7HX

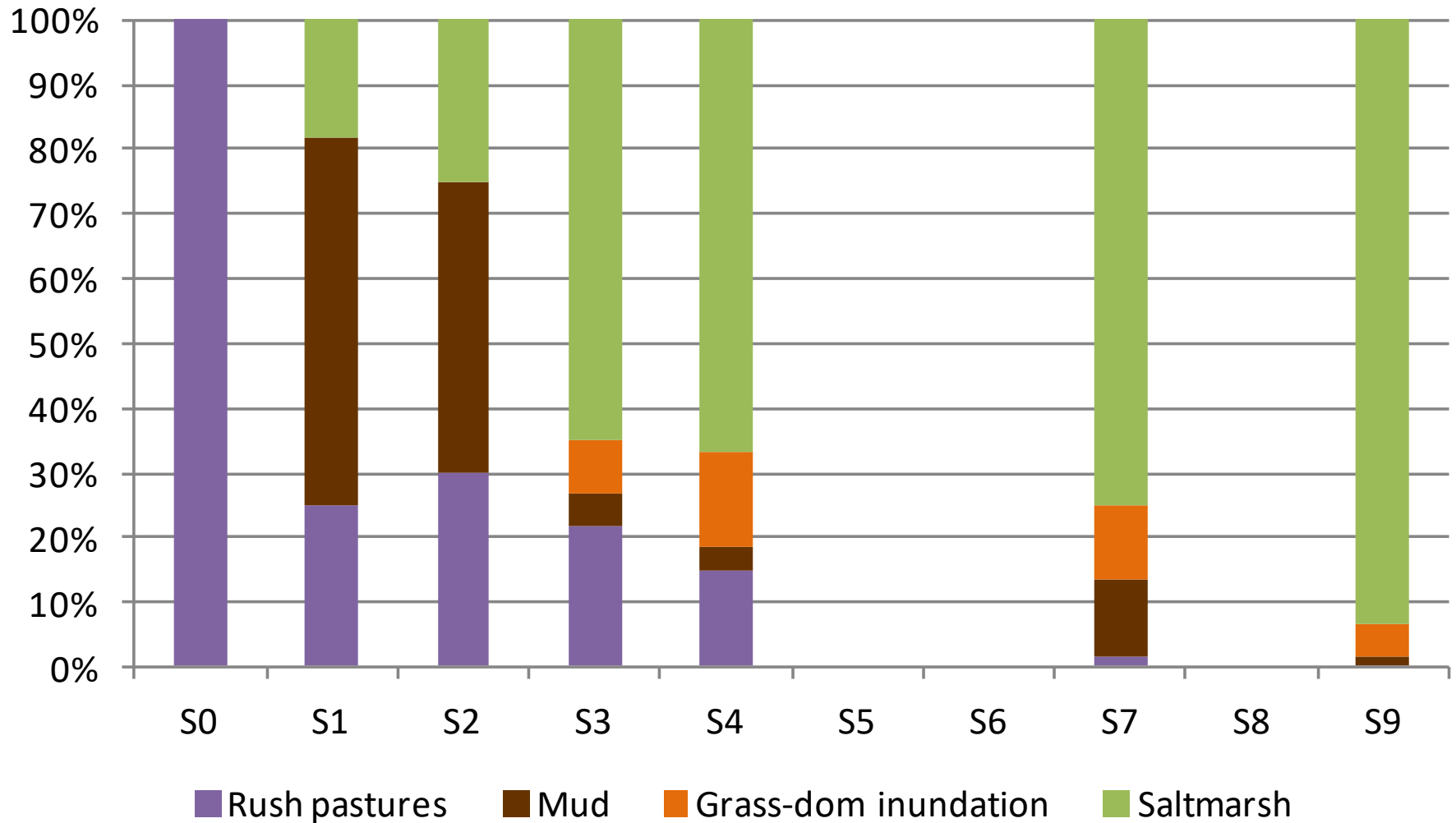


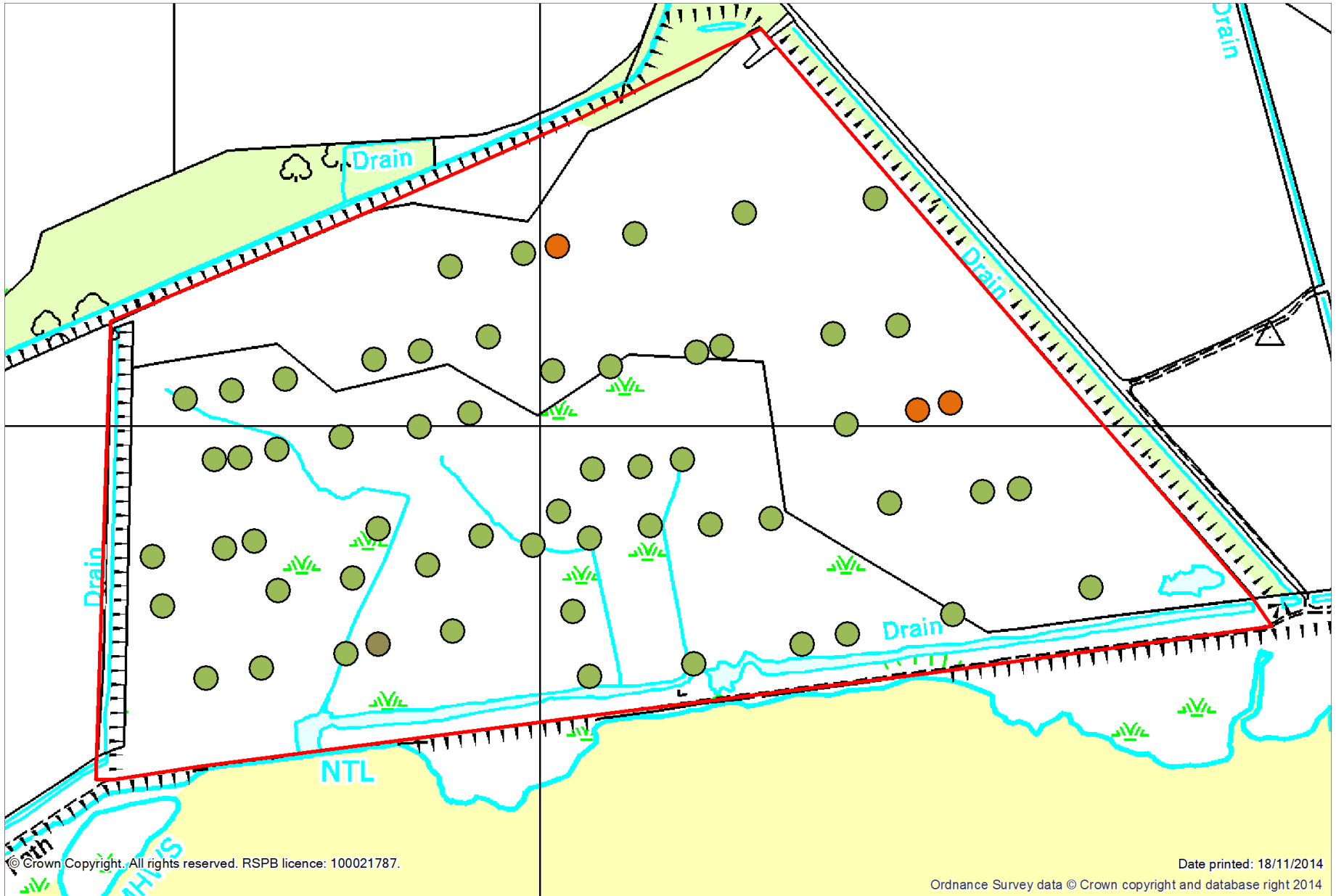


Ecological changes

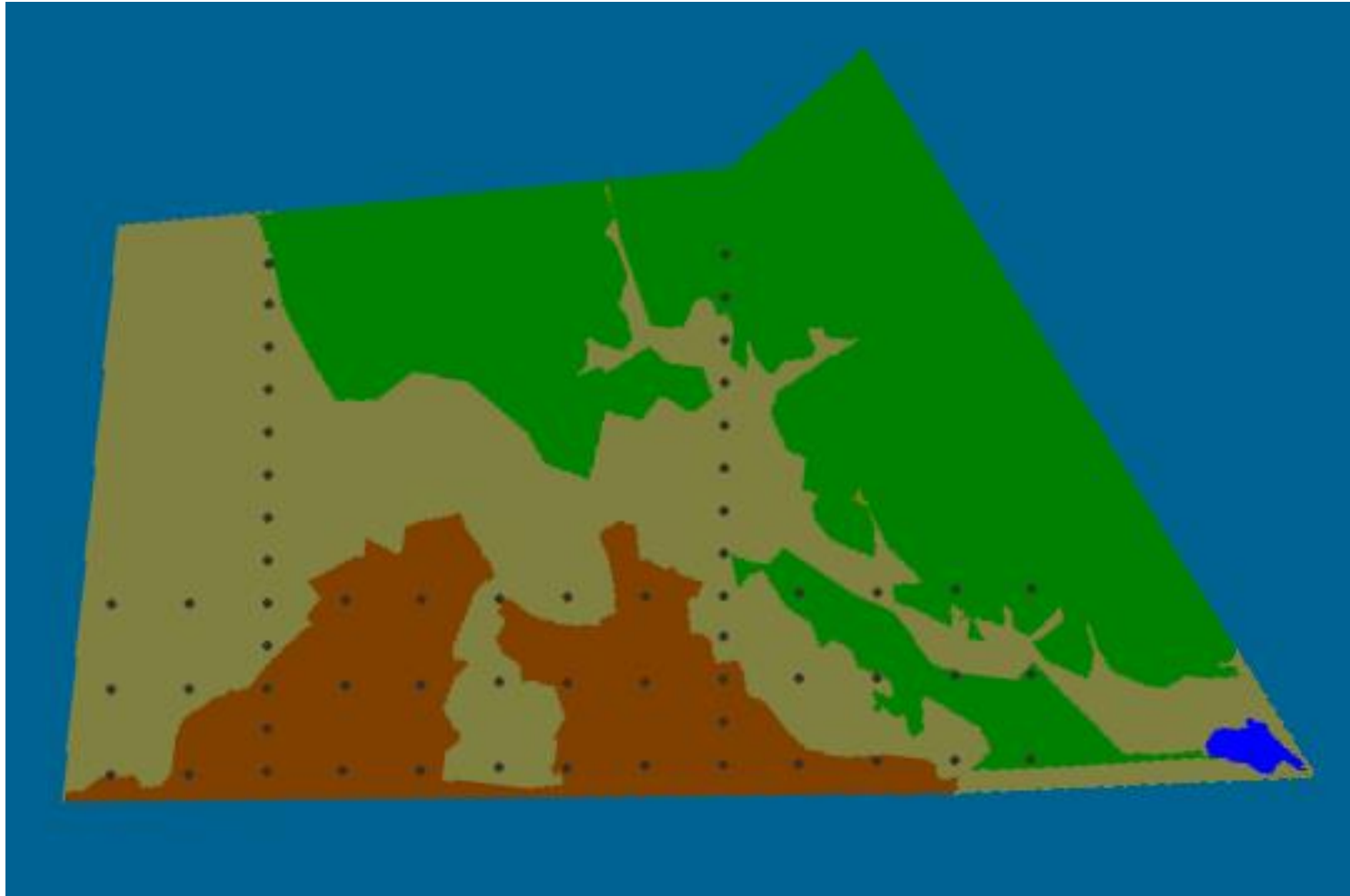
- vegetation
- benthic invertebrates
- birds

Vegetation Change





Benthic Invertebrates



Benthic Invertebrates



Macoma balthica – Baltic tellin



Hydrobia ulvae - Mudsnail

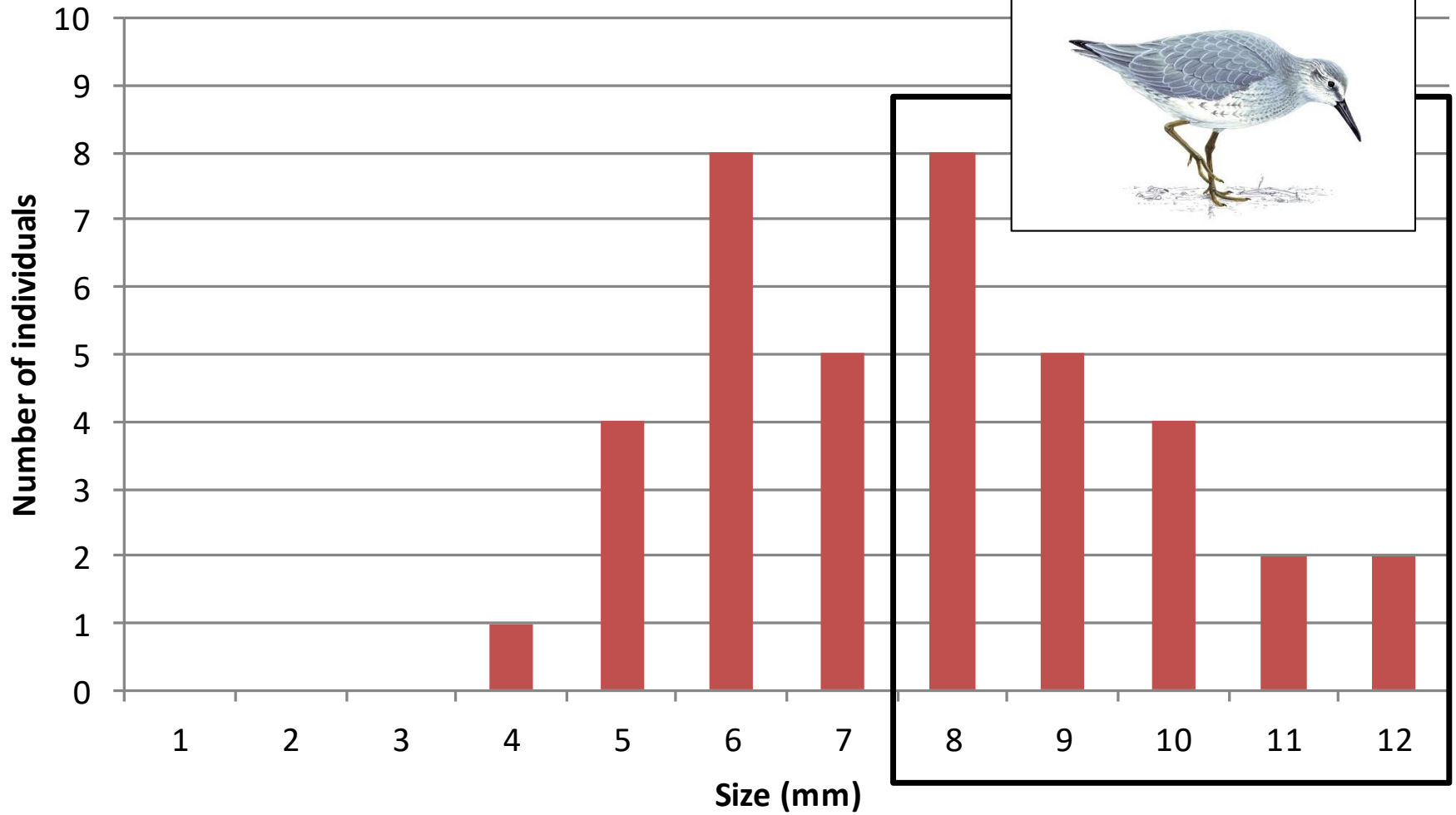


Hediste diversicolor - Ragworm



Corophium sp. – Mud Shrimp spp.

Macoma size classes



Data from 2011

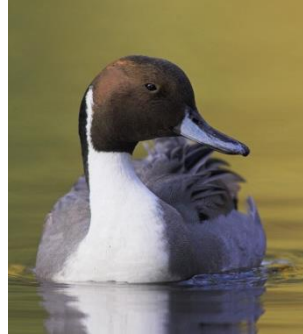
Birds



Waders



Wildfowl



Bad weather = more birds



°C







Coastal Realignment at RSPB Nigg Bay Nature Reserve

Steph Elliott
Site Manager, Central Highland Reserves
September 2015

bitly.com/niggbay



North Scotland In Focus - RSPB Nigg Bay

from Amy Thompson **PLUS** 1 year ago

More from Amy Thompson
 Autoplay on