

# NATUR'ADAPT

A NEW WAY OF LOOKING AT NATURE

The story of a protected area manager  
facing climate change  
2018- 2023



2010-2016: PROJECT GENESIS.



I MAY HAVE BEEN AWARE OF IT, BUT IT WAS WHEN I WENT THROUGH THE LANDSCAPES I'M SUPPOSED TO BE PROTECTING THAT I REALISED THE SCALE OF THE DISASTER.



MY MISSION IS TO PROTECT NATURE. I'M A PROTECTED AREA MANAGER.



BUT WITH CLIMATE CHANGE, IS IT STILL POSSIBLE?



HELLO, RÉSERVES NATURELLES DE FRANCE?

\*

\* XYNTHA STORM (2010)

THE 3SD NATURE RESERVES NEED YOUR HELP.



SARAH BELIN ①

2016-2018: WRITING AND STARTING THE PROJECT.

I CONTACTED RNF WITH THE IDEA OF WORKING TOGETHER TO DEVELOP AND TEST USEFUL TOOLS IN THE FIELD TO HELP TACKLE CLIMATE CHANGE.

TOGETHER WITH OUR PARTNERS, WE SUBMITTED THE LIFE NATUR' ADAPT PROJECT.

WE'VE GOT VALIDATION FROM EUROPE! WE CAN START BUILDING!



DECEMBER 2018: NATUR' ADAPT OPENING SEMINAR.



WHO IS THIS GUY AGAIN?

I WONDER WHAT I'M DOING HERE.

WITH CLIMATE CHANGE, WE'RE HEADING STRAIGHT FOR THE WALL.

CAN WE REALLY ADAPT?

IT'S SO FAR-REACHING, THEY'LL NEVER MANAGE IT!

MEETING FOR THE FIRST TIME, WE WERE MOTIVATED, BUT WE STILL HAD OUR DOUBTS.

AT THE TIME, WE DIDN'T REALISE THE EXTENT TO WHICH OUR JOBS AS PROTECTED AREA MANAGERS WOULD BE TURNED UPSIDE DOWN.



IT'S NOT WORKING!

MAYBE LIKE THIS?

THE PREVIOUS VERSION WAS BETTER...

EUREKA!

SARAH BELIN ②

2019-2020: EXPERIMENTATION ON SIX NATURE RESERVES.

LIKE THE REST OF THE TEAM, I WENT THROUGH A WHOLE RANGE OF EMOTIONS WHEN I EMBARKED ON THIS LIFE PROJECT.



THE FRUSTRATION OF FEELING USELESS IN MY JOB, THE ANGER AT THE CLIMATE'S INACTION...

BUT ABOVE THE SADNESS OF LOSING WHAT

I FIGHT FOR EVERYDAY: BIODIVERSITY.



WHAT WILL HAPPEN TO YOU IF IT DOESN'T RAIN ENOUGH? IF THE POND DRIES UP EVEN MORE?

HEY HO BRO! WE'RE IN A BAD WAY WITHOUT A POND, BUT WE'VE GOT YOU, THERE MUST BE SOMETHING YOU CAN DO!

YOU'RE WRIGHT, WE MUSTN'T GIVE UP, I NEED TO FIND WAYS OF ADAPTING TO THE CHANGES AS BEST I CAN!



THIS POND SEEMS TO BE LESS AFFECTED BY THE DROUGHT. I SUGGEST YOU MIGRATE THERE! AND I'M GOING TO MAKE SURE WE DON'T CUTE DOWN THESE TREES, TO PRESERVE THE SHADE!

WE'LL SET UP A WEATHER STATION HERE AND COME AND COUNT YOU EVERY YEAH TO SEE IF IT WORKS!



WE'RE GOING TO TALK TO THE LOCAL COUNCIL ABOUT EXTENDING THE PROTECTION PERIMETER AND ORGANISING A VIGIL TO EXPLAIN ALL THIS TO THE LOCALS!



THANKS TO NATUR' ADAPT, I'VE PUT ON MY CLIMATE CHANGE GLASSES! I'VE INCORPORATED THIS PHENOMENON INTO MY THINKING SOFTWARE TO HELP ME PRIORITISE MY LONG-TERM OBJECTIVES AND MY DAY-TO-DAY ACTIONS!



2021-2022: TESTING ON FIFTEEN NEW SITES.

WE HAVE SELECTED FIFTEEN NEW SITES FROM A HOST OF APPLICATIONS TO TEST THE

ONLINE TRAINING AND METHODOLOGICAL GUIDE WE HAVE DEVELOPED. THE NATUR' ADAPT COMMUNITY IS GROWING! WILL WE BE ABLE TO INTEGRATE THEM INTO OUR THINKING WITHOUT GOING BACKWARDS?



THEY WERE LIKE US AT THE START: WE HELPED THEM AND SUPPORTED THEM IN THEIR QUESTIONING.



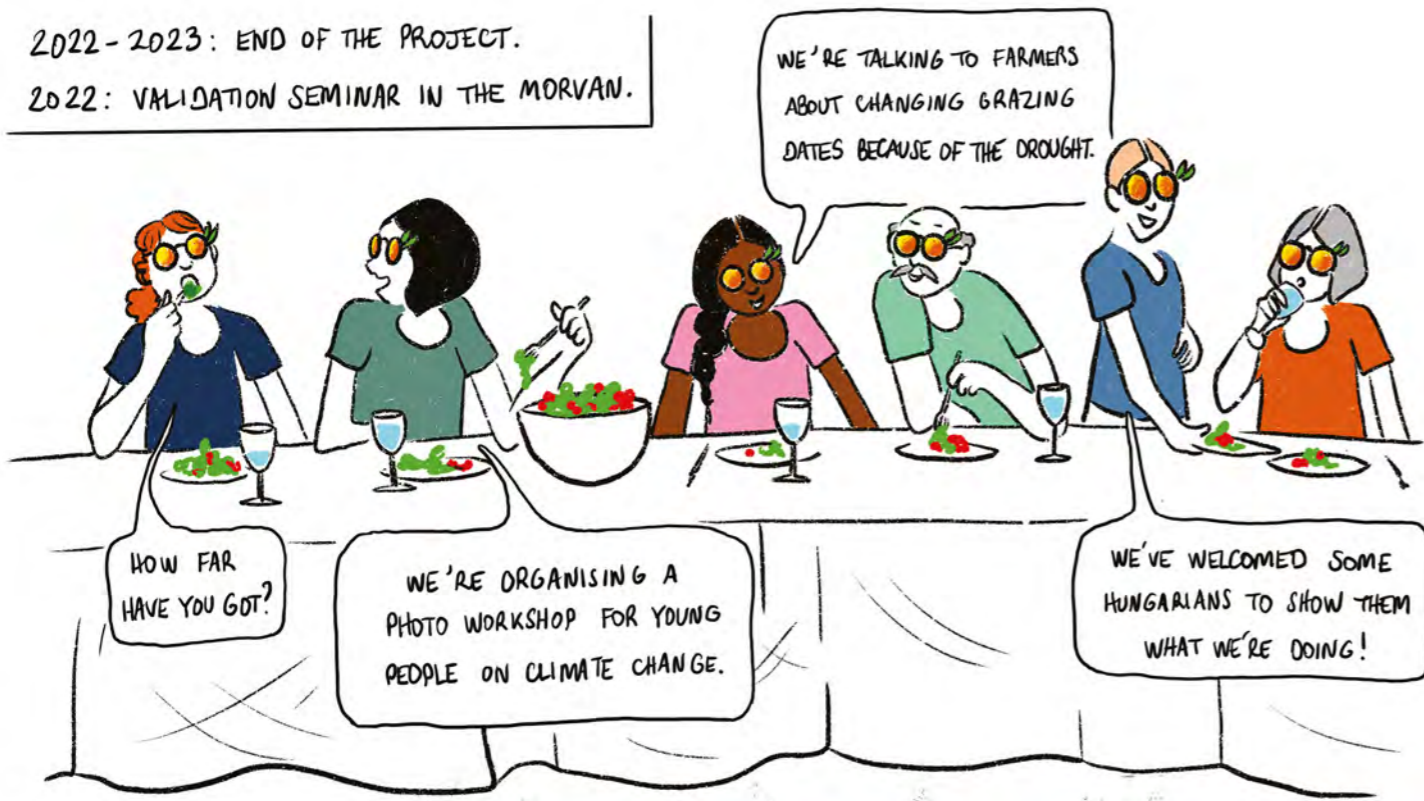
TO UNDERSTAND HOW THE CLIMATE IS GOING TO DEVELOP ON MY SITE, I'VE DOWNLOADED ALL THE METEO-FRANCE DATA!

BUT I DON'T KNOW WHAT TO DO WITH IT!

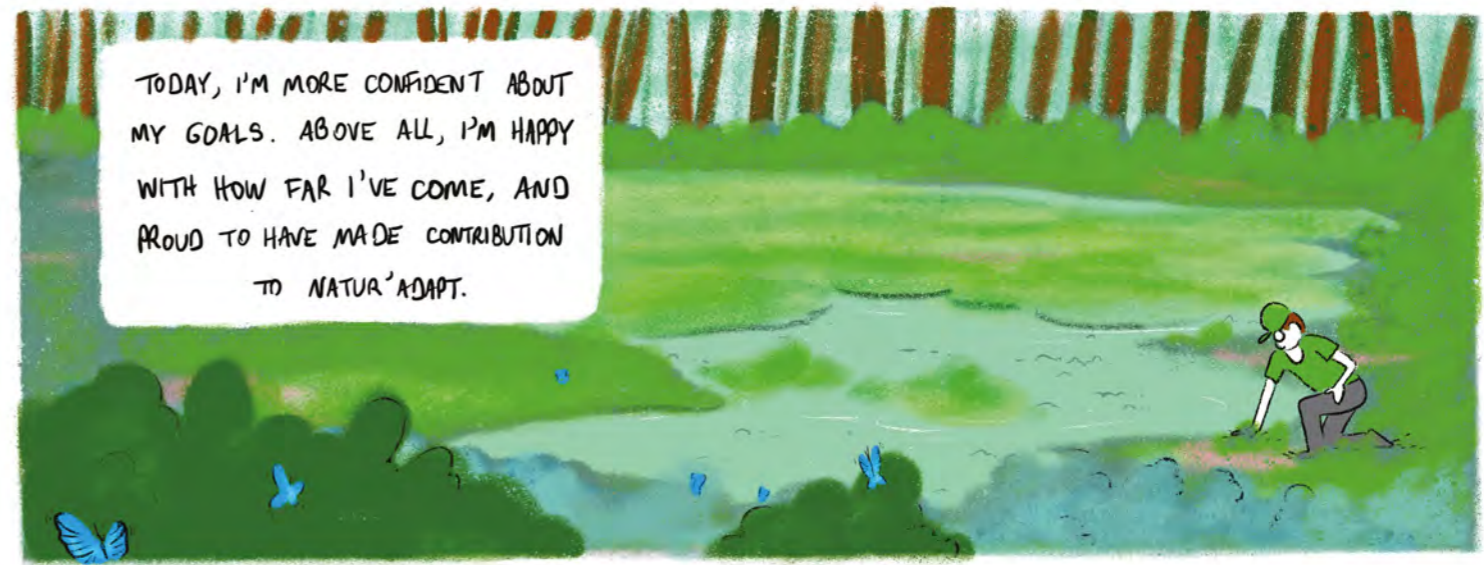
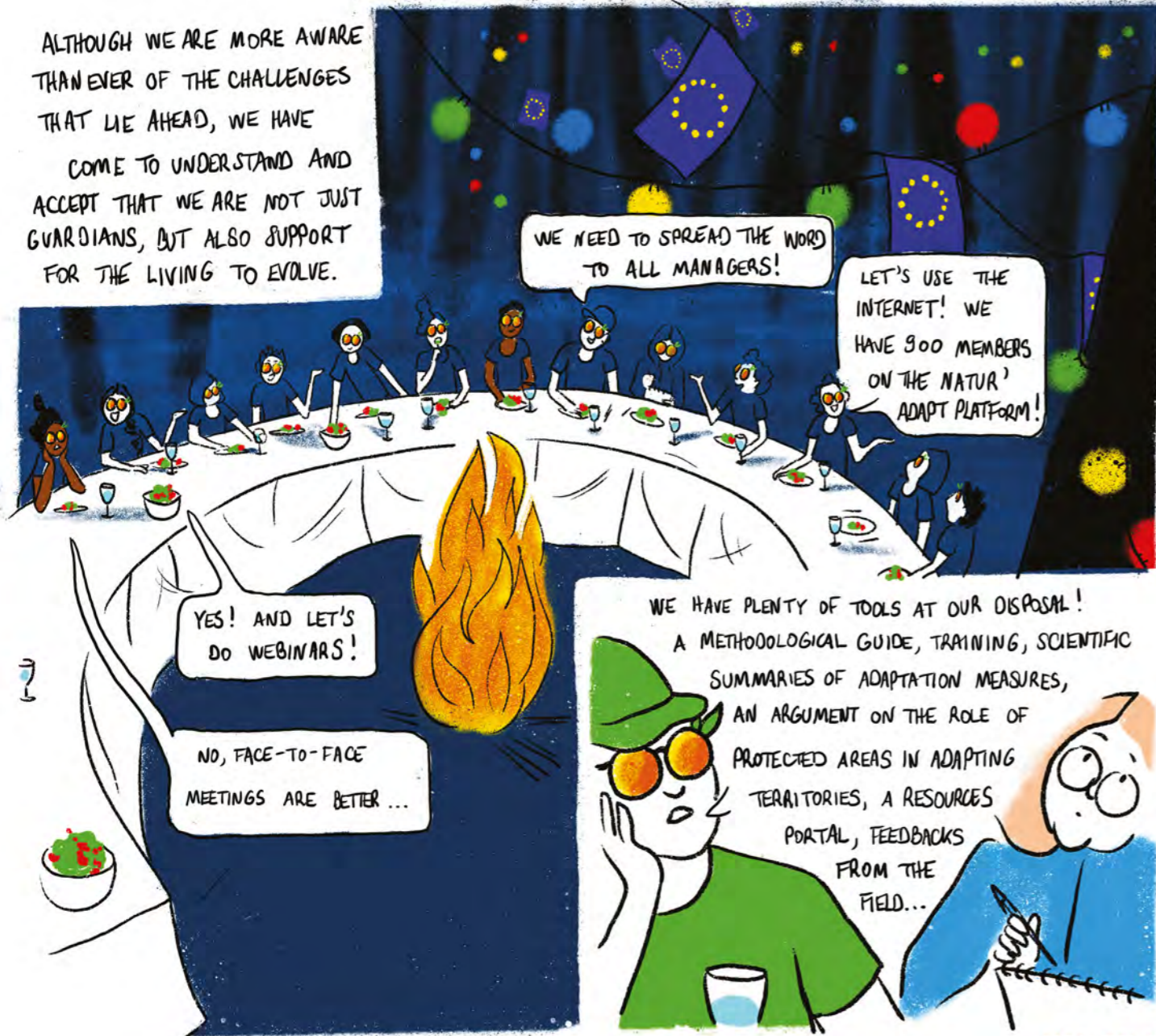
DON'T DROWN ON CLIMATE DATA! THE TRENDS ARE ENOUGH!



2022-2023: END OF THE PROJECT.  
2022: VALIDATION SEMINAR IN THE MORVAN.



ALTHOUGH WE ARE MORE AWARE THAN EVER OF THE CHALLENGES THAT LIE AHEAD, WE HAVE COME TO UNDERSTAND AND ACCEPT THAT WE ARE NOT JUST GUARDIANS, BUT ALSO SUPPORT FOR THE LIVING TO EVOLVE.





The LIFE Natur'Adapt project is a collaborative project aimed at integrating climate change into the management of protected areas in France and Europe. Coordinated by Réserves naturelles de France, with a total budget of €4.2 million (including €2.5 million from the European Commission), it was implemented from mid-2018 to mid-2023 by a collective of ten partners, around three axes:

- Developing operational tools and methods for managers of natural areas to help them adapt to climate change (drawing up a vulnerability assessment and an adaptation plan);
- Developing and leading a community around adapting the management of natural areas to climate change, in particular via the naturadapt.com platform;
- Activating all the levers (institutional, financial, awareness-raising, etc.) needed to put adaptation into practice.

The various tools and methods were tested on six of the project's partner reserves, then reviewed and tested on 15 other sites before being rolled out on a national and European scale. In all, more than 180 people contributed to this project.

## THE 21 LIFE NATUR'ADAPT SITES

- 6 Sites pilotes
- 15 Sites test



Find the LIFE Natur'Adapt project resources in English here:  
[www.pearltrees.com/aires\\_protegees\\_et\\_changement\\_climatique/resources-in-english/id39456284](http://www.pearltrees.com/aires_protegees_et_changement_climatique/resources-in-english/id39456284)

### Project coordinator

With the financial support of

Contact : [naturadapt@rnfrance.org](mailto:naturadapt@rnfrance.org)  
 +33 (0)3.80.48.91.00  
 LIFE #CC #NATURADAPT - LIFE17 CCA/FR/000089

### Partners involved in the project

### Project co-financers

The Natur'Adapt project has received funding from the LIFE Programme of the European Union