

# FOREST MONITORING AND MANAGEMENT ADAPTATION TO CLIMATE CHANGE IN EUROPEAN AREAS

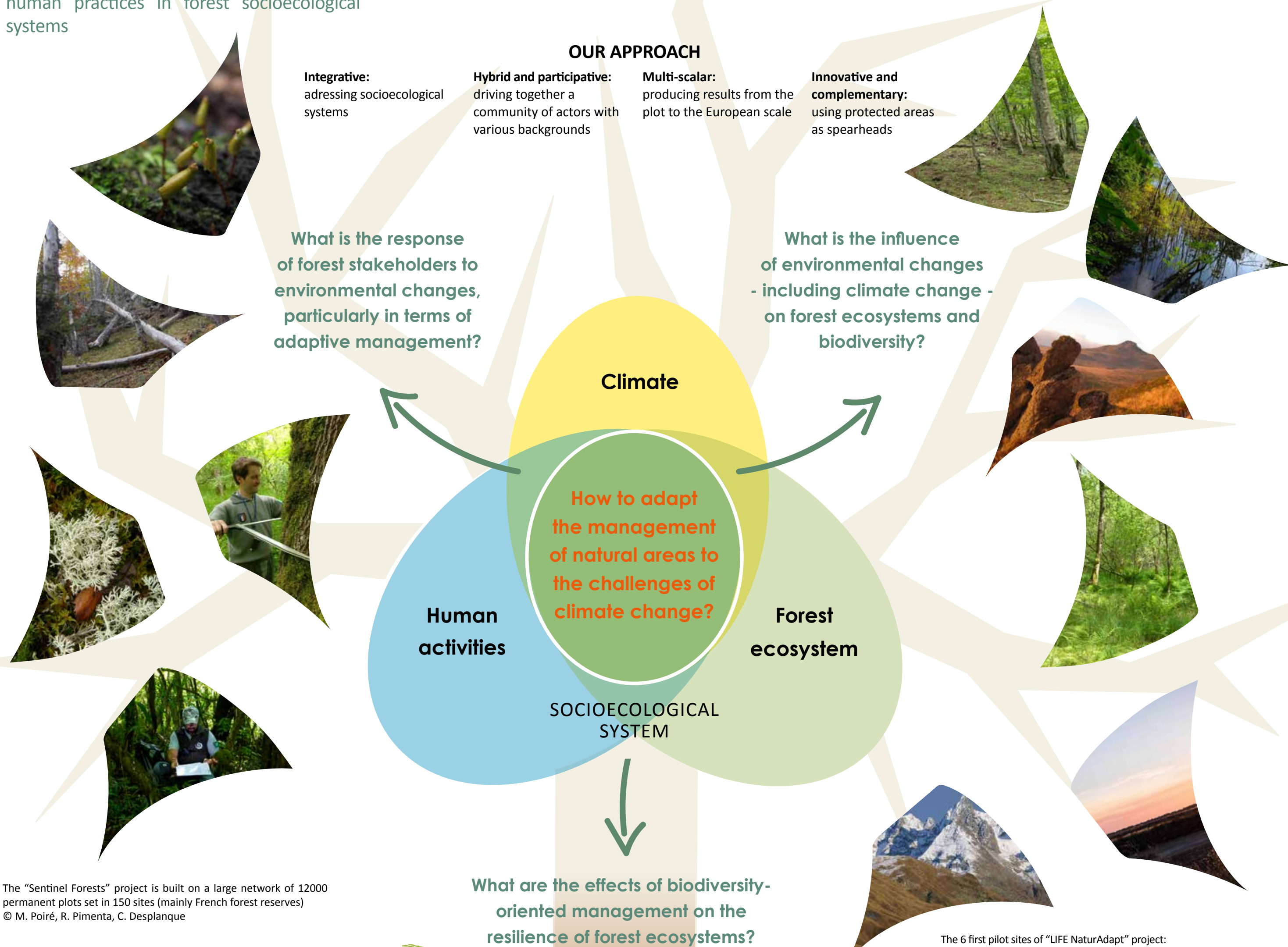
Forests are complex socioecological systems subjected to the increasing frequency and intensity of global changes. In the meantime, stakeholders may find themselves helpless when brought face to face with the increasing vulnerability of biodiversity towards climate change. In this context, Réserves Naturelles de France and its partners set-up two complementary projects:

## Sentinel Forests 2018-2021

Building knowledge on the interactions between forest ecosystems, climate and human practices in forest socioecological systems

## LIFE NaturAdapt 2018-2023

Adapting nature protection to the challenges of climate change in Europe



The "Sentinel Forests" project is built on a large network of 12000 permanent plots set in 150 sites (mainly French forest reserves)  
© M. Poiré, R. Pimenta, C. Desplanque

The 6 first pilot sites of "LIFE NaturAdapt" project:  
Natural reserves of: Forêt de la Massane © D. Sorel, Petite Camargue Alsacienne © J. Witt SIPA PRESS, Chastreix Sancy © Th. Leroy, Tourbières du Morvan © C. Dodelin, Lilleaud des niges © D. Pacaud, Sixt Passy © Julien Heuret



- Provide stakeholders with reliable and useful standardized tools for knowledge and management improvement
- Produce reliable data for research on interactions between biodiversity, climate and human practices

### OBJECTIVES

- Mainstreaming climate change into the management and protection of natural sites by:**
- Designing methods and tools
  - Experimenting them on 6, then 15 sites
  - Spreading the results around Europe

- Methods, tools and training sessions to carry out monitoring protocols and to integrate results into management schemes
- Community of experts and practitioners to promote collective learning as part of an adaptive management scheme
- Research programs on interactions between biodiversity, climate and human practices

### OUTPUT

- Methods, tools and training sessions to carry out vulnerability assessments and adaptation plans in natural areas
- Community of experts and practitioners on adaptation in the management of natural areas, backed by an online platform
- Recommendations for decision-makers on how to facilitate adaptation

### Funding



### Two projects led by



### Funding



### Support



### Together with

### Partners



### Collaboration



Contact: Nicolas Debaive, nicolas.debaive-rnf@espaces-naturels.fr

The NaturAdapt project has received funding from the LIFE Programme of the European Union  
LIFE 17 CCA/FR/000089-LIFE #CC #NaturAdapt

Contact: Anne-Cerise Tissot, annecerise.tissot-rnf@espaces-naturels.fr